

# Purdy Pumpkins #2027

© Reneé Mullins 2003

## PALETTE – DecoArt Americana

Buttermilk

Tangerine

Tangelo Orange

Oxblood

Russet

Heritage Brick

Plantation Pine

True Red

Burnt Umber

Lamp Black

## BRUSHES – Loew-Cornell (Golden Taklon)

Wash/Glaze: 1"

Angular: 3/8", 1/2"

Round: #2, #4

Liner: #18/0

## ADDITIONAL SUPPLIES

1/8" Baltic Birch Plywood (for ornaments or magnets)

Magnets

Jute

Super Glue

DecoArt Matte Spray Finisher/ Sealer

#.005 Black Micron Pen

**OPTIONAL** items that these faces can be reduced or enlarged to fit on to paint are:

Gourds

Pumpkins

Light Bulbs

Yard Signs

Cut-outs for wreaths

Soap

Jars

Candles

Plates/Trays

Mouse Pads

Goodie/Treat Bags

Tin Cans

Paint Cans

## CUTTING INSTRUCTIONS

Cut the pumpkins for magnets from 1/8" wood.

## PREPARATION

Sand all pieces until smooth and wipe with tack cloth

## PAINTING INSTRUCTIONS

**Background:** Basecoat the pumpkin with Tangelo Orange. Shade the inside curves of the pumpkin with Oxblood. Highlight the outside curves with Tangerine.

**Stems:** Basecoat the pumpkin stems with Plantation Pine.

Paint over the stem with a thin wash of Burnt Umber to tone down the green.

**Cheeks:** Drybrush the cheeks with True Red.

**Transfer the face onto the cut-out.**

**Eyes:** Paint the eyes with Buttermilk and the pupils with Black. Shade around the outside of the eyes with a brush mix of Heritage Brick and Burnt Umber. On the eyes that have eyelids that are half-way closed, Paint the eyelids with Tangelo Orange and highlight along the outside edge of the eyelids with Buttermilk.

**Teeth:** Paint the teeth with Buttermilk.

**Nose:** Float around the inside of the nose with Primary Red, just along the edge. If your float is too wide and covers the whole inside of the nose, take a wet round brush and dab the center of the nose to take some of the paint out. Deepen the shading along the bottom left corner of the nose with Heritage Brick. Highlight the nose with a comma stroke of Buttermilk.

**Sweat drops:**

Paint comma strokes of Buttermilk.

**Spiders, mouth lines, mustache, moles, are painted with Black.**

**FINISHING**

Erase any remaining transfer or pencil marks. With a fine marker - # .005 Black Micron Pen – Draw all outlines, stitches, and detail marks. *You will want to “set the ink” with DecoArt Matte Spray Finisher/Sealer, or some type of “fixative”, before you Varnish, or your ink will smear.* Varnish or spray with DecoArt Matte Spray Finisher/Sealer. Attach magnets to the back of the pumpkins with Super Glue. Tie a piece of jute around the stem and tie off into a bow.

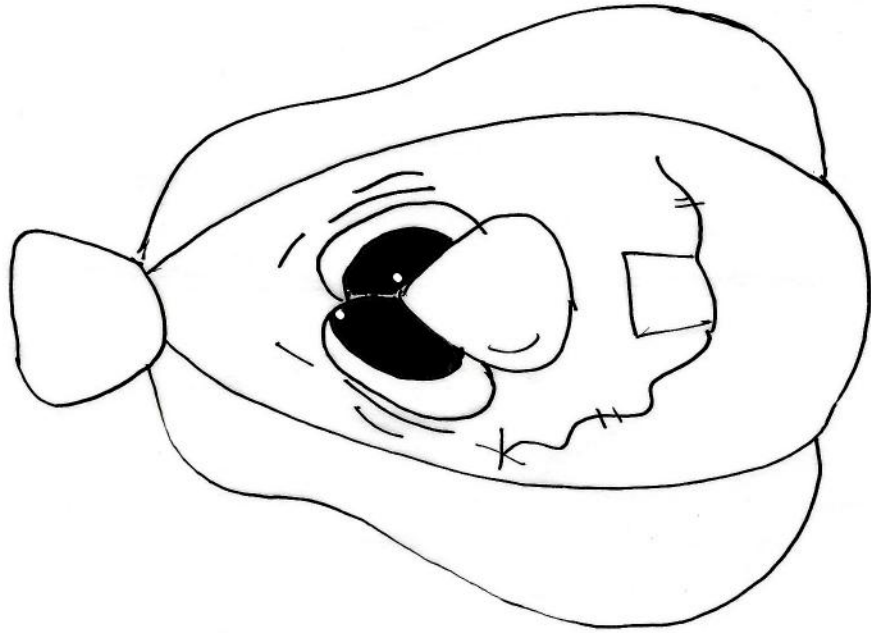
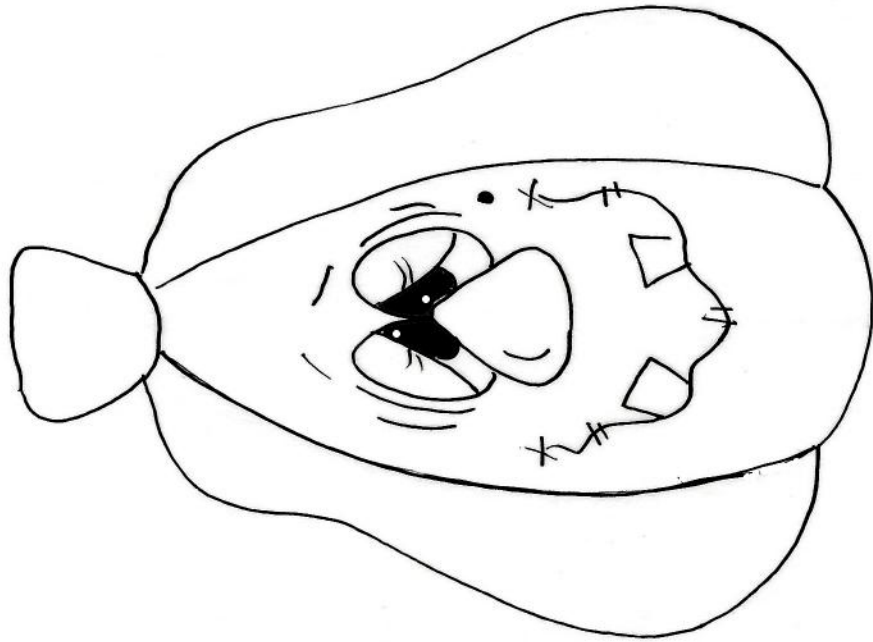
**Here is a close-up of one of the pumpkins to show all the detailing with the #.005 Black Micron Pen.**



**\*\*FREE PATTERN\*\* NOT FOR RE-SALE**  
**www.plumpurdy.com**

Plum Purdy®  
DESIGNS

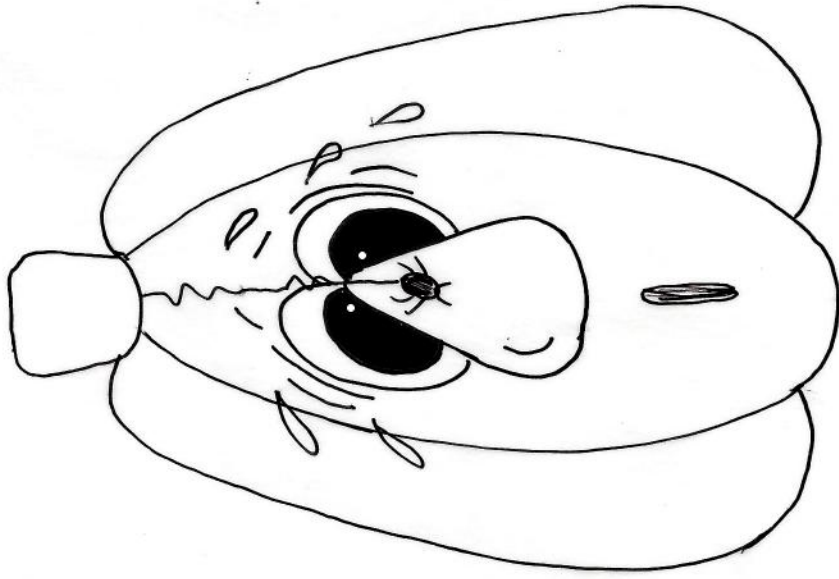
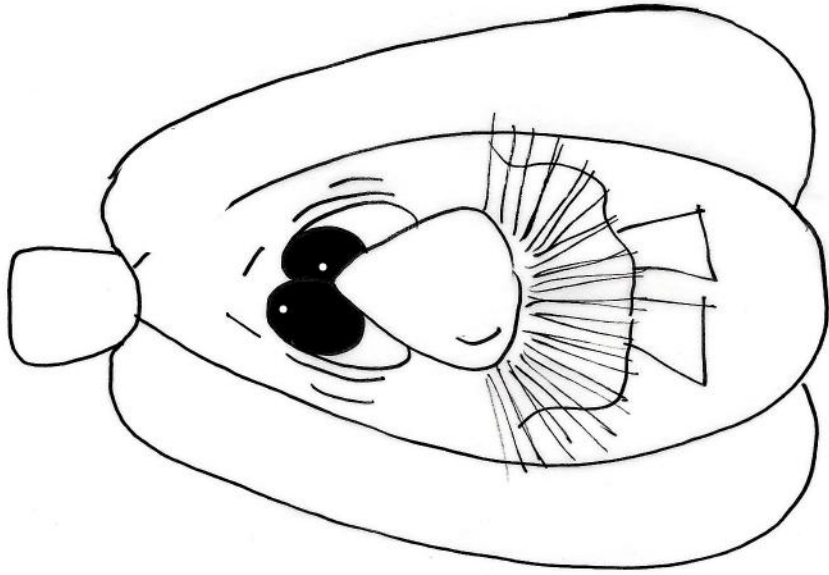
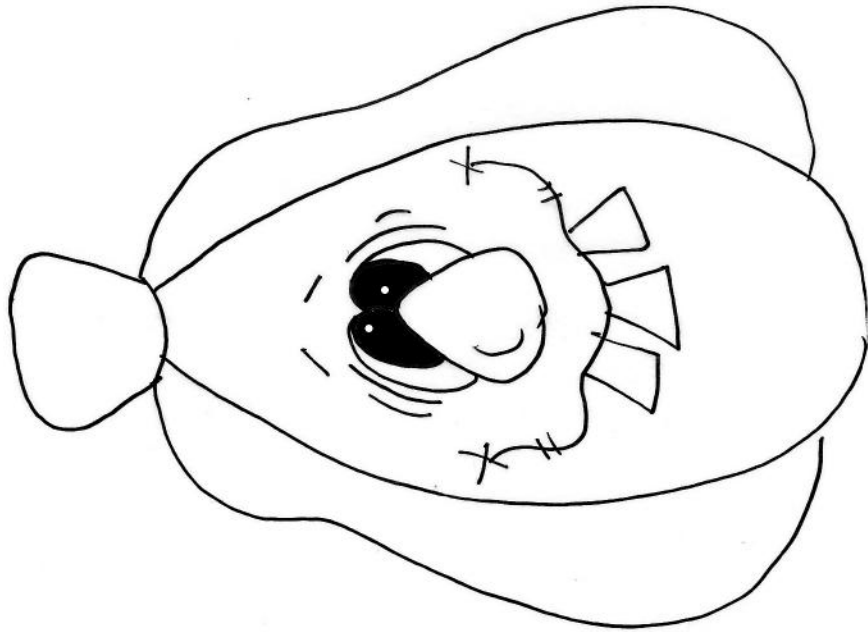
© Reneé Mullins 2003



[www.plumpurdy.com](http://www.plumpurdy.com)

Plum Purdy®  
DESIGNS

© Reneé Mullins 2003



[www.plumpurdy.com](http://www.plumpurdy.com)





© Renee' Mullins 2003