

Bumble Bee

Stencil #105

© Renee' Mullins 2009



To stencil, I use a tiny disposable make-up sponge, although the most common use is with a stipple brush. You can purchase a package

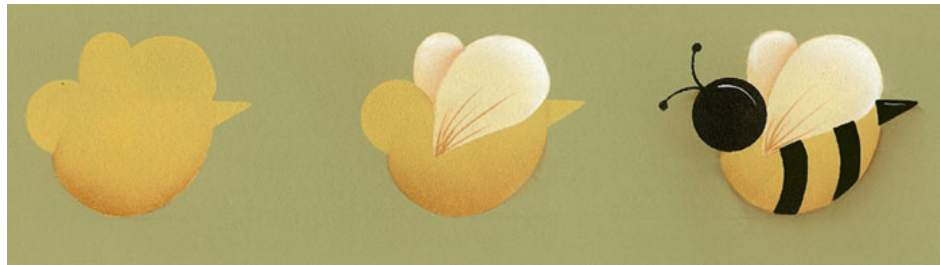
of these at any store that sells make-up products (Wal-Mart, grocery store, drug store). If you use the make-up sponge, it will give you more control and a softer look to your stenciled image.



Take your make-up sponge and dip the square end into the paint. Pounce most of it off on your palette. Position your stencil onto your surface and pounce

lightly. If you have too much paint on your sponge and pounce too hard, the paint will seep under the stencil.

You can reuse the sponge to start stenciling with another color by snipping off the end.



Step #1

With Golden Straw, stencil the entire bumble bee.

Shade along the bottom of the bee with Burnt Sienna

Step #2

With Sand, stencil the wings.

Shade between the wings and paint the thin detail lines with Milk Chocolate.

Highlight the wings with Titanium White.

Step #3

With Lamp Black, stencil the remainder of the bee. Paint a thin highlight stroke along the top of the head and the top of the tail with Titanium White. You can shade under the bee to make it stand out and pop.